

# A PLAT OF THE SANCTUARY

A P.U.D.

BEING A REPLAT OF A PORTION OF LOT 28 AND ALL OF LOT 29, GOMEZ GRANT & JUPITER ISLAND, AS RECORDED IN PLAT BOOK 1, PAGE 80 OF THE PUBLIC RECORDS OF PALM BEACH (NOW MARTIN) COUNTY, FLORIDA. ALL LYING WITHIN THE GOMEZ GRANT, MARTIN COUNTY, FLORIDA

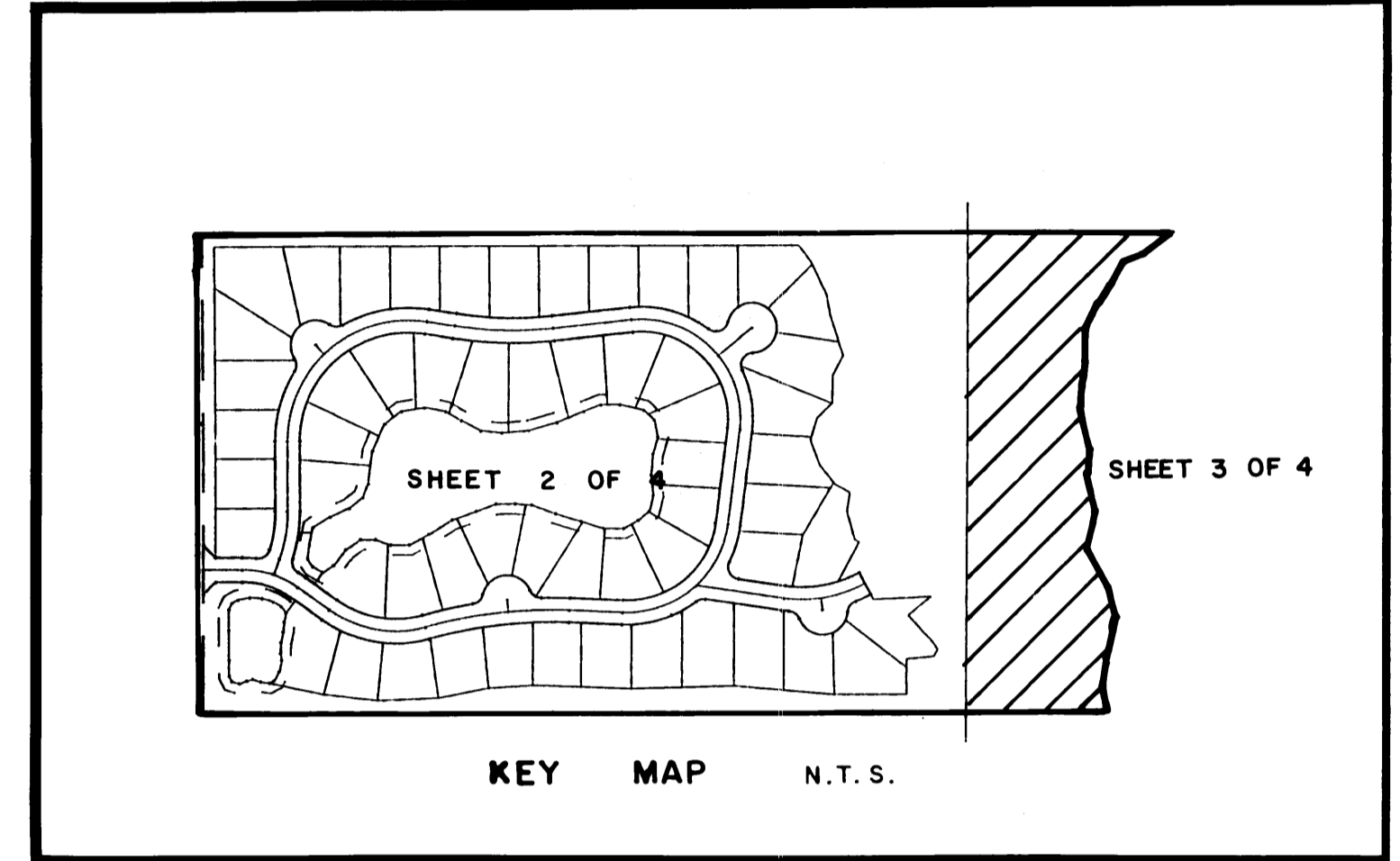
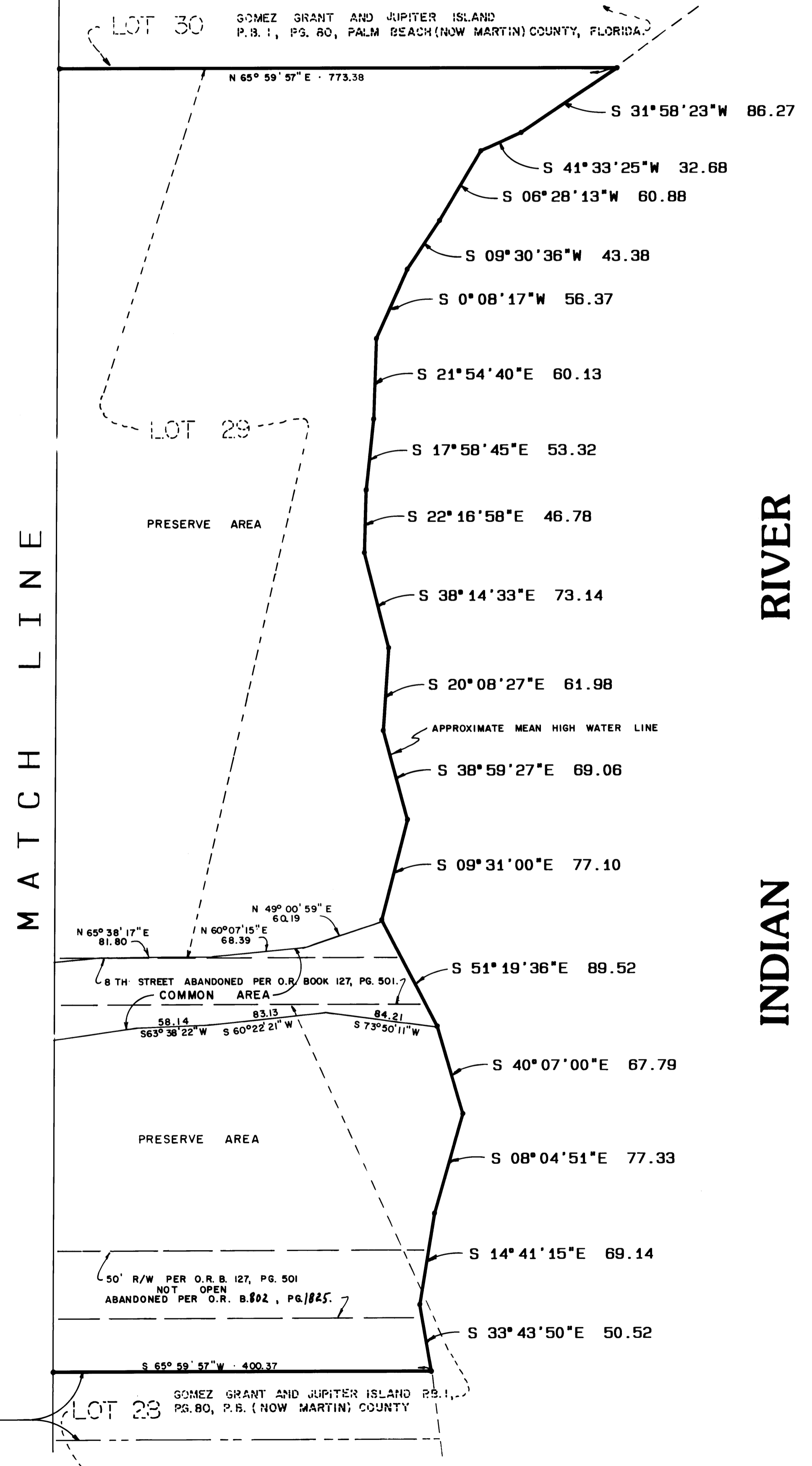
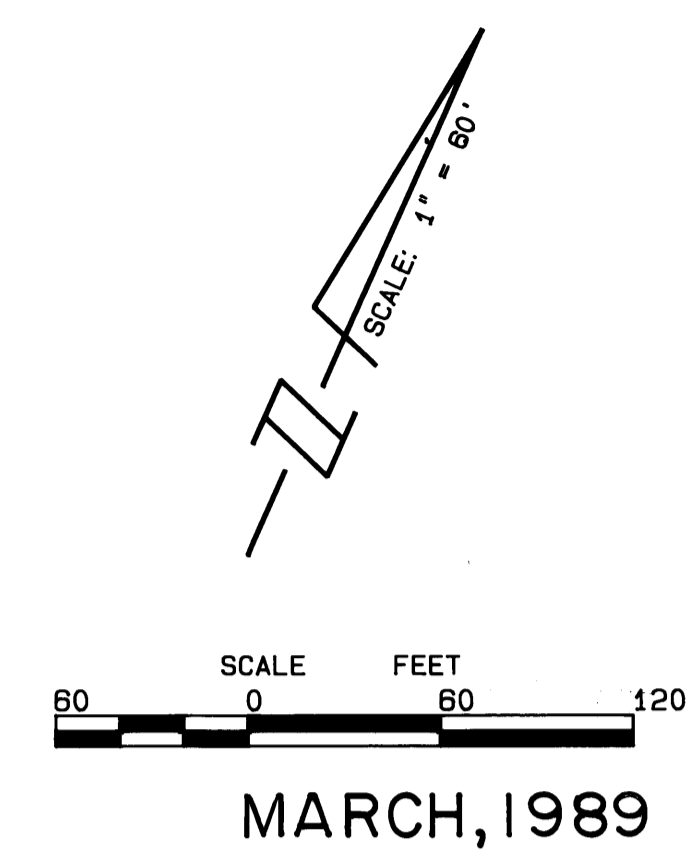
I, MARSHA STILLER, CLERK OF THE CIRCUIT COURT OF MARTIN COUNTY, FLORIDA, HEREBY CERTIFY THAT THIS PLAT WAS FILED FOR RECORD IN PLAT BOOK 11, PAGE 86, MARTIN COUNTY, FLORIDA, PUBLIC RECORDS, THIS \_\_\_\_\_ DAY OF \_\_\_\_\_, 1989.

MARSHA STILLER, CLERK CIRCUIT COURT MARTIN COUNTY, FLORIDA.

BY: \_\_\_\_\_ DEPUTY CLERK

FILE NO. \_\_\_\_\_

(CIRCUIT COURT SEAL)



50' ROAD RIGHT WAY PER O.R. BOOK #02, PAGE 182, MARTIN COUNTY, FLORIDA. (PUBLIC RECORDS)

LINDAHL, BROWNING FERRARI & HELLSTROM, INC.  
CONSULTING ENGINEERS, PLANNERS & SURVEYORS  
P.O. BOX 77  
JUPITER, FLORIDA 33466  
1985 SOUTH 25TH STREET  
SUITE 90  
FORT PIERCE, FLORIDA 34947

3 4